



Rabbit Anti-Human Vimentin Monoclonal Antibody (Clone SP20)

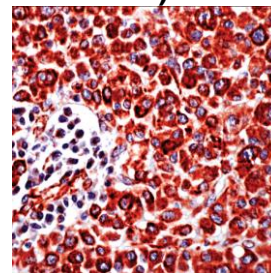
CATALOG #:

M3200 0.1 ml rabbit monoclonal antibody supplied as tissue culture supernatant in TBS/1% BSA buffer pH 7.5 with less than 0.1% sodium azide.

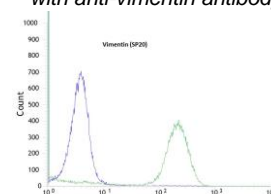
M3202 0.5 ml rabbit monoclonal antibody supplied as tissue culture supernatant in TBS/1% BSA buffer pH 7.5 with less than 0.1% sodium azide.

M3204 1.0 ml rabbit monoclonal antibody supplied as tissue culture supernatant in TBS/1% BSA buffer pH 7.5 with less than 0.1% sodium azide.

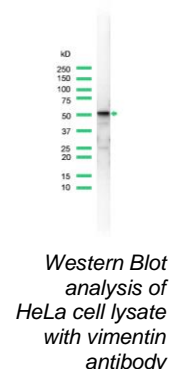
M3201 7.0 ml pre-diluted rabbit monoclonal antibody supplied as tissue culture supernatant in TBS/1% BSA buffer pH 7.6 with less than 0.1% sodium azide.
(For IHC only)



Human melanoma stained with anti-vimentin antibody



Flow cytometric analysis of rabbit anti-Vimentin (SP20) antibody in HeLa (green) compare to negative control of rabbit IgG (blue)



Western Blot analysis of HeLa cell lysate with vimentin antibody

INTENDED USE:

For Research Use Only. Not for use in diagnostic procedures.

CLONE:

SP20

IMMUNOGEN:

Recombinant human vimentin protein.

IG ISOTYPE:

Rabbit IgG

EPITOPE:

Not determined

MOLECULAR WEIGHT

53kDa

SPECIES REACTIVITY:

Human (tested). (See www.springbio.com for information on species reactivity predicted by sequence homology.)

DESCRIPTION:

Vimentin is the main intermediate filament protein in mesenchymal cells. This protein is believed to be involved with the intracellular transport of proteins between the nucleus and plasma membrane. Vimentin is expressed in sarcomas of neural, muscle and fibroblast origin, but carcinomas are generally negative. Melanomas, lymphomas and vascular tumors may all stain for Vimentin.

APPLICATIONS:

Immunohistochemistry (IHC), Western Blotting, and Flow Cytometry

IHC PROCEDURE:

Specimen Preparation: Formalin-fixed, paraffin-embedded tissues are suitable for use with this primary antibody.

Deparaffinization: Deparaffinize slides using xylene or xylene alternative and graded alcohols.

Antibody Dilution: If using the concentrate format of this product, dilute the antibody 1:200. The dilutions are estimates; actual results may differ because of variability in methods and protocols.

Antigen Retrieval: None

Primary Antibody Incubation: Incubate for 30 minutes at room temperature.

Slide Washing: Slides must be washed in between steps. Rinse slides with PBS/0.05% Tween.

Visualization: Detect the antibody as instructed by the instructions provided with the visualization system.

IHC POSITIVE CONTROL:

Melanomas, sarcomas

WESTERN BLOTTING:

Recommended starting protocol: Dilute the antibody 1:100. Incubate for 1 hour at room temperature.

The dilution is an estimate; actual results may differ because of variability in methods and protocols. Optimal dilution and procedure should be determined by the end user.

WESTERN BLOTTING

POSITIVE CONTROL:

HeLa Cell Lysate

CELLULAR LOCALIZATION:

Cytoplasm

FLOW CYTOMETRY:

Recommended starting protocol: Dilute the antibody 1:100. Incubate for 30 minutes at 4°C. The dilution is an estimate; actual results may differ because of variability in methods and protocols. Optimal dilution and procedure should be determined by the end user.

**FLOW CYTOMETRY
POSTIVE CONTROL:**

HeLa Cell Line

STORAGE & STABILITY

Store at 2-8°C. Do not freeze. The user must validate any other storage conditions. When properly stored, the reagent is stable to the date indicated on the label. Do not use the reagent beyond the expiration date.

There are no definitive signs to indicate instability of this product; therefore, positive and negative controls should be tested simultaneously with unknown specimens.

If unexpected results are observed which cannot be explained by variations in laboratory procedures and a problem with the reagent is suspected, contact Technical Support at spring.tech@ventana.roche.com.

**WARNINGS &
PRECAUTIONS:**

1. Avoid contact of reagents with eyes and mucous membranes. If reagents come into contact with sensitive areas, wash with copious amounts of water.
2. This product is harmful if swallowed.
3. Consult local or state authorities with regard to recommended method of disposal.
4. Avoid microbial contamination of reagents.